

Location 970

CLINICA
MODERNA
ROMA (RM)

ModernacClinica a Roma con corridoi degenze, sale degenza, sale chirurgiche, ambulatori medici, analisi cliniche, ostetricia, sala parto, nido, risonanza magnetica, Tac, uffici, palestra, fisioterapia, parcheggio.

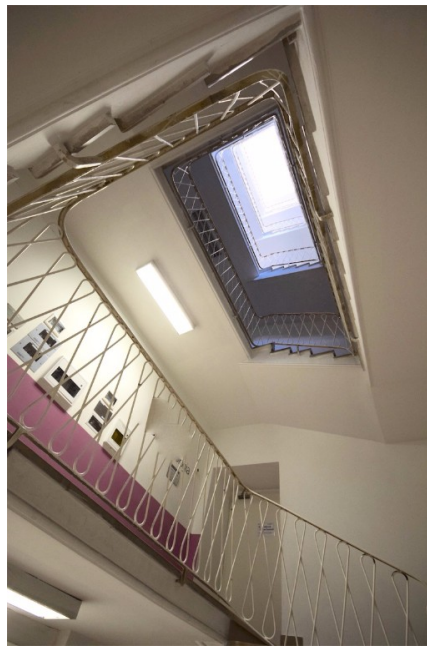


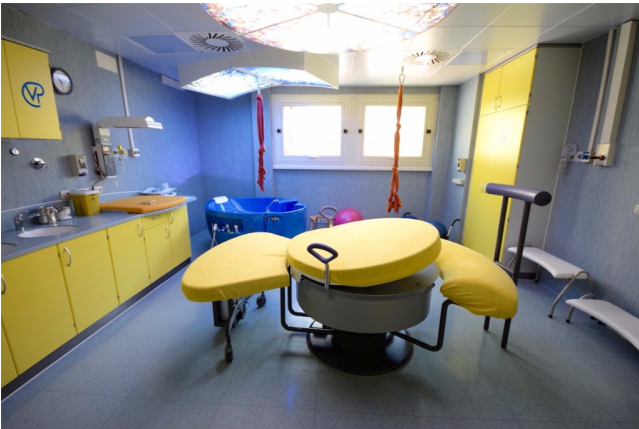


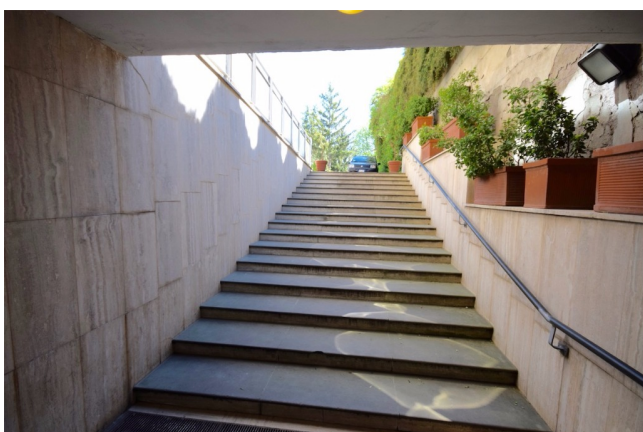
















Si può consultare la scheda online di questa location all'indirizzo <http://www.inlocation.it/location/970>