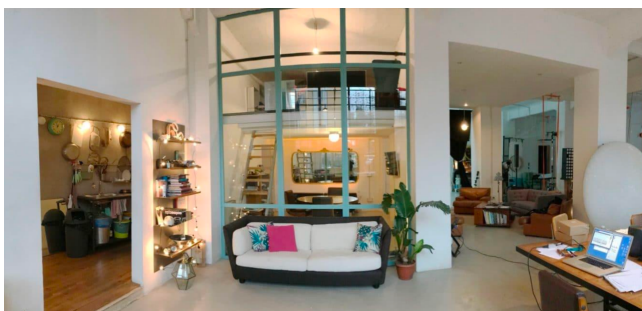
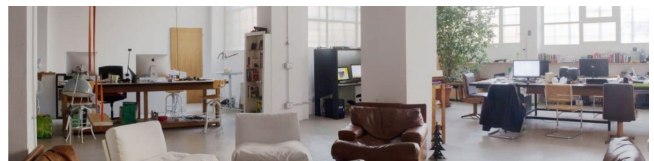
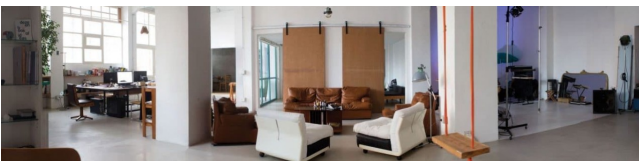
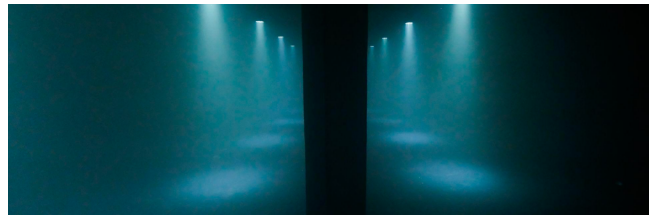
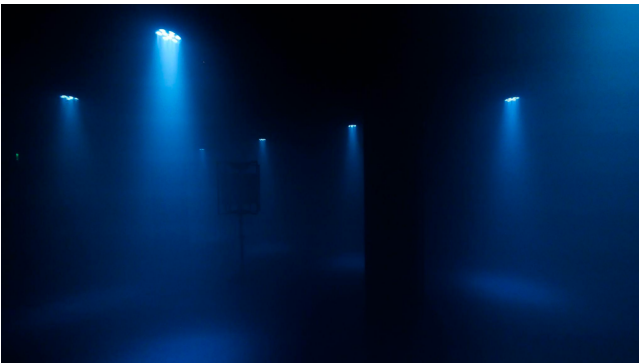
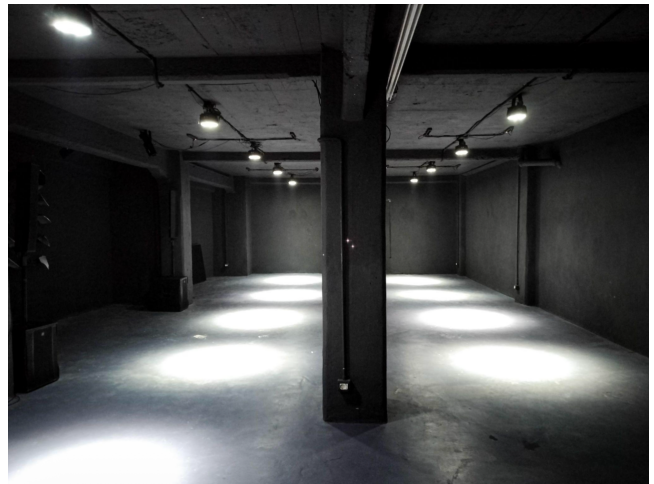
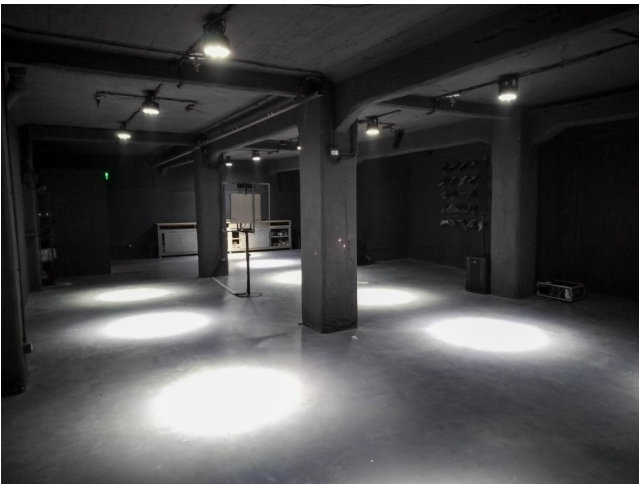
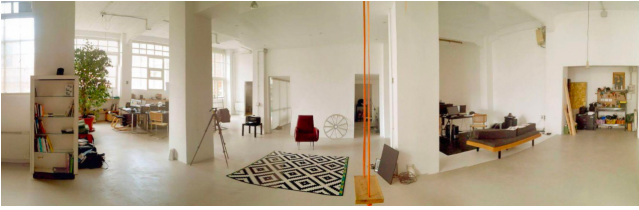


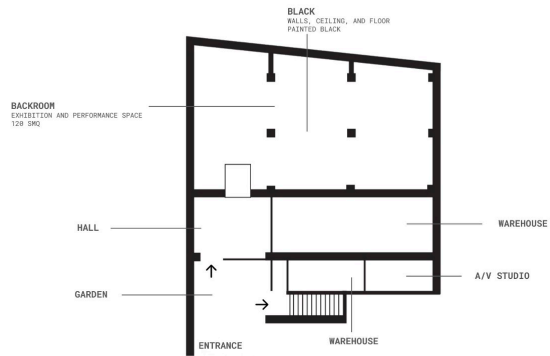
Location 4102

LOFT
CONTEMPORANEO
ROMA (RM) OSTIENSE

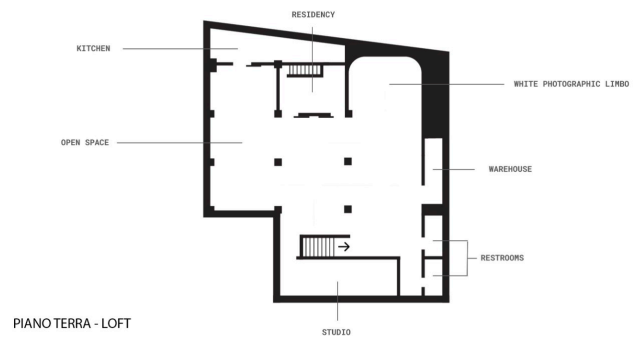
Loft industriale a metà tra casa e studio d'artista. Disposto su due livelli, ampi spazi, grande vetrate e colonne.







PIANO -1 - BACKROOM



Si può consultare la scheda online di questa location all'indirizzo <http://www.inlocation.it/location/4102>