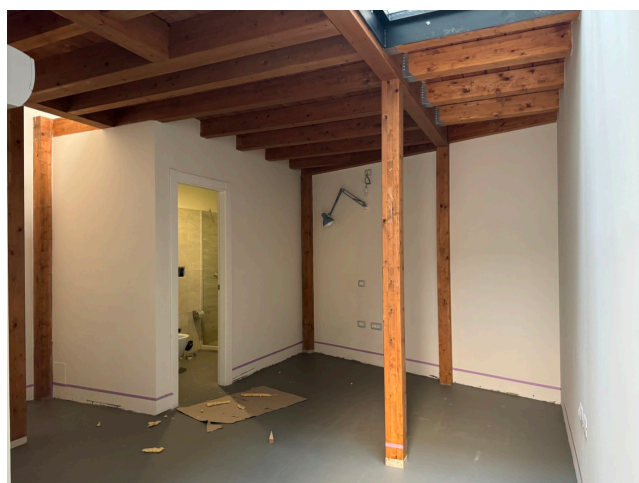
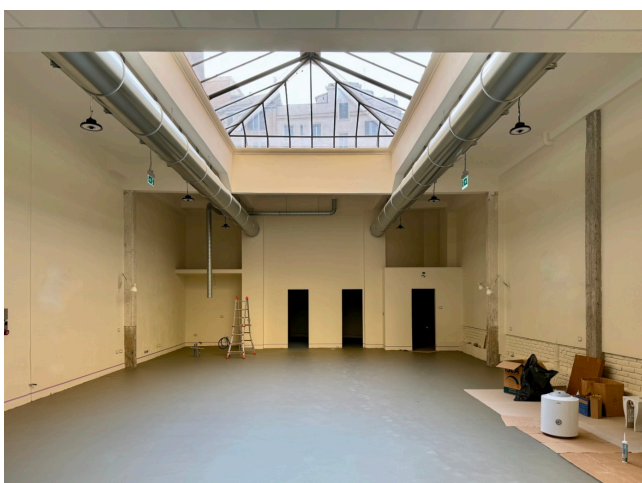
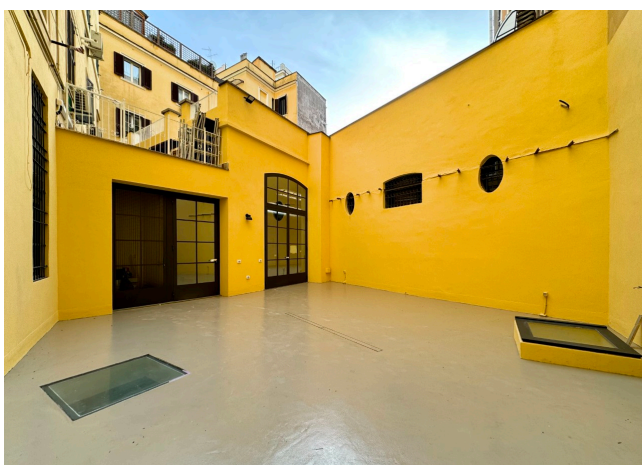
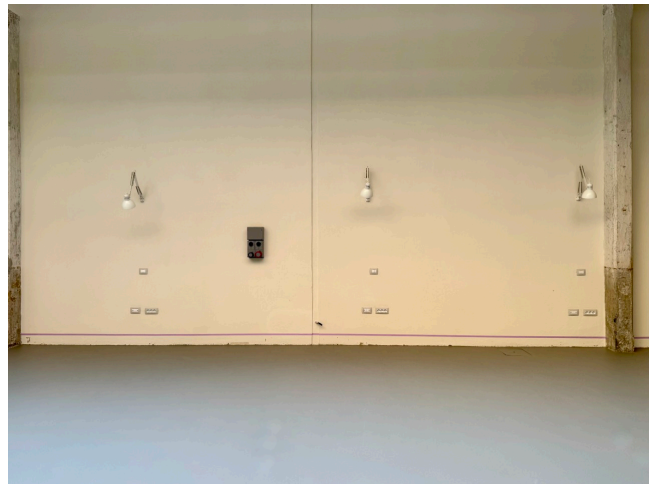
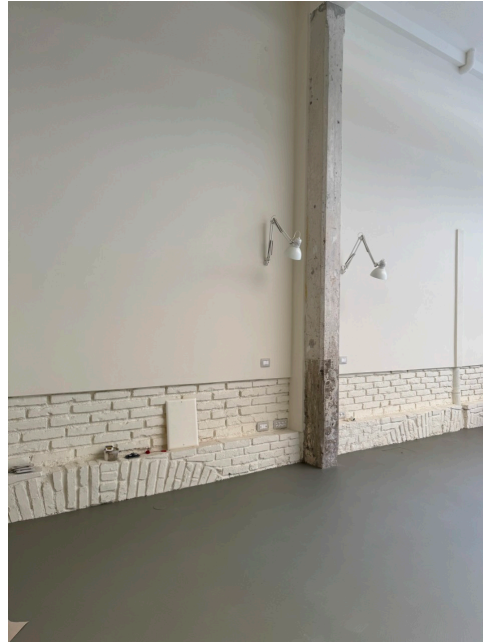


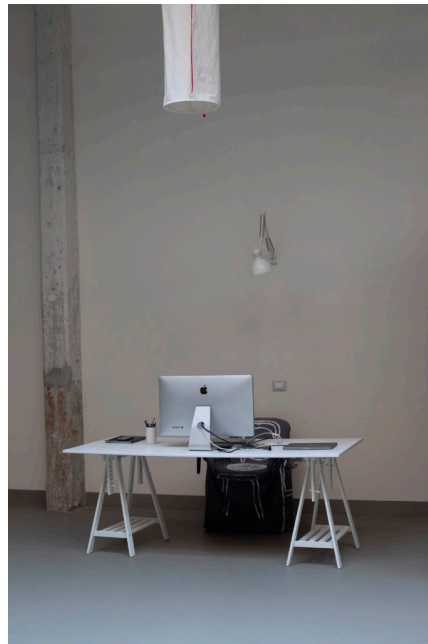
Location 3360

LOFT
INDUSTRIALE
ROMA (RM) PRATI - VATICANO

Loft industriale ex Vetreteria di 220mq (piano terra) con soffitto in vetro (daylight), pavimento in resina. Condizionato. Al -1 spazi (200 mq) con bagni. Spazio all'aperto di proprietà, passo carraio x auto.



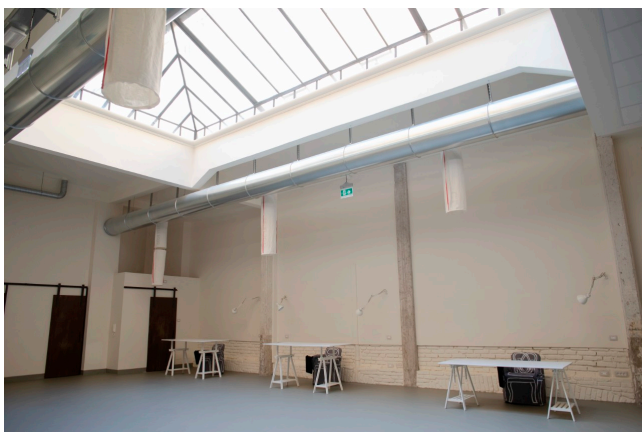












Si può consultare la scheda online di questa location all'indirizzo <http://www.inlocation.it/location/3360>