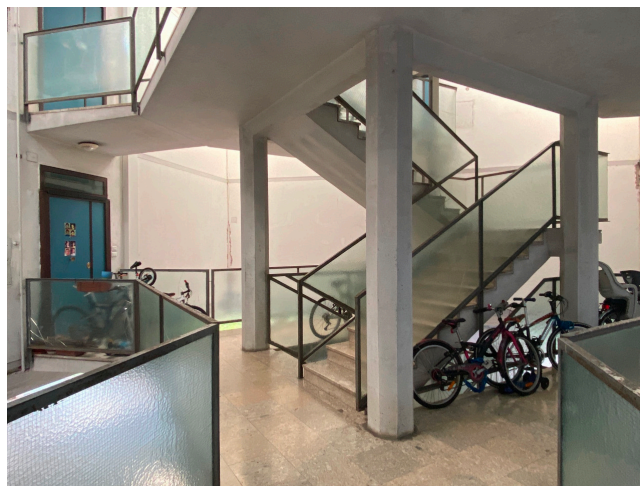
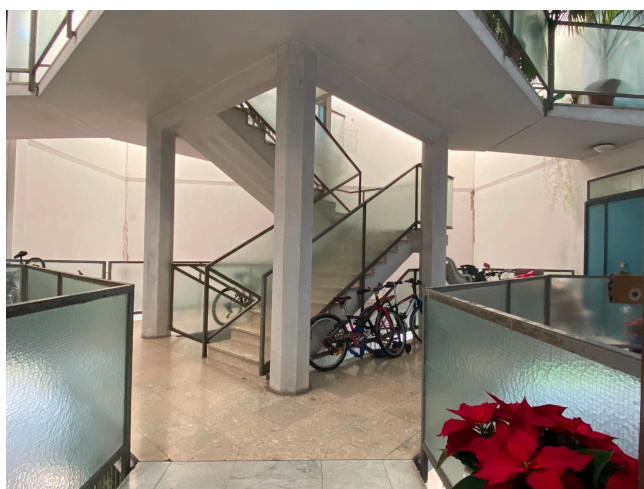


Location 2120

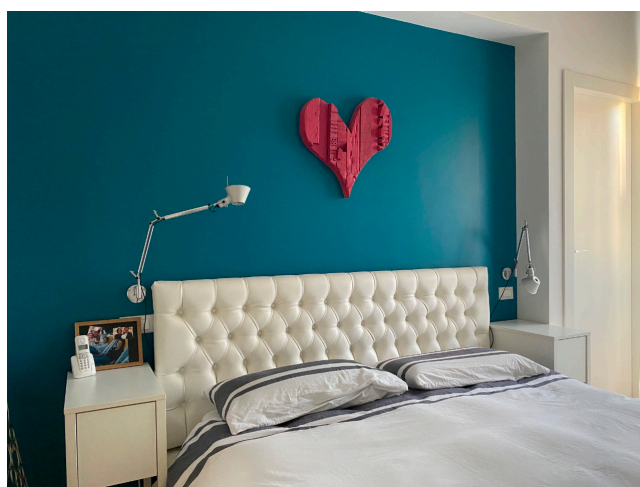
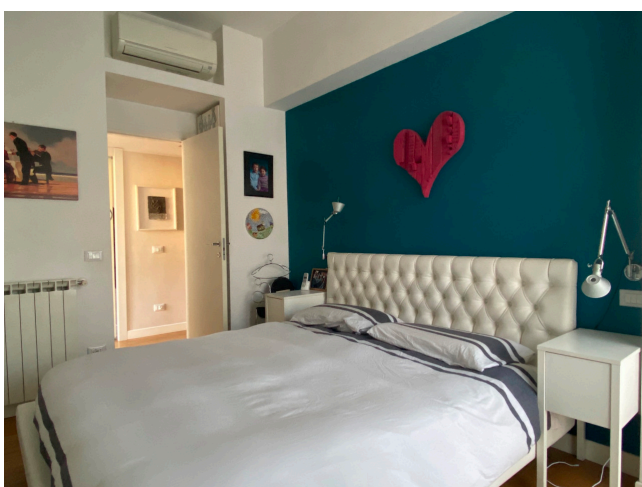
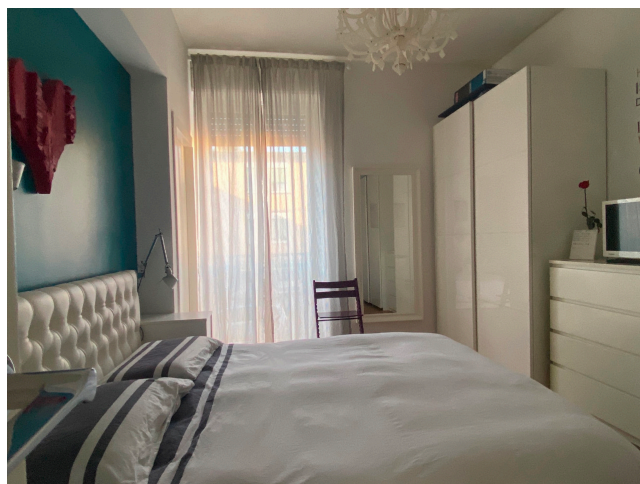
APPARTAMENTO
CONTEMPORANEO
ROMA (RM)

Comodo appartamento in complesso residenziale. Primo piano Ideale per riprese cinematografiche. Salone open su cucina, tre stanze da letto e studio. Luminoso.









Si può consultare la scheda online di questa location all'indirizzo <http://www.inlocation.it/location/2120>