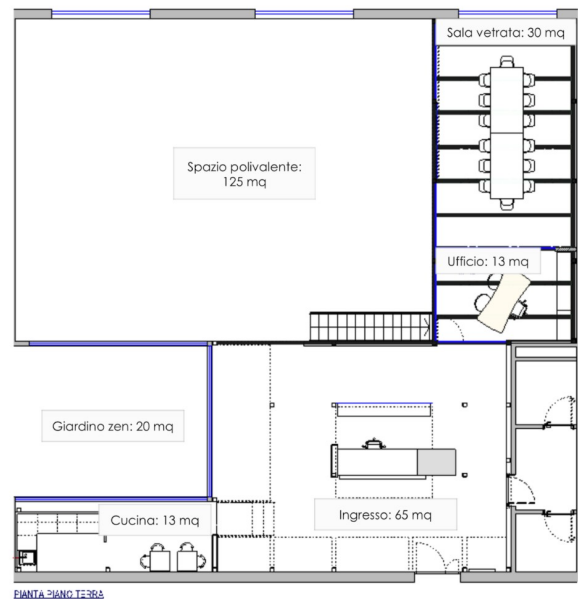
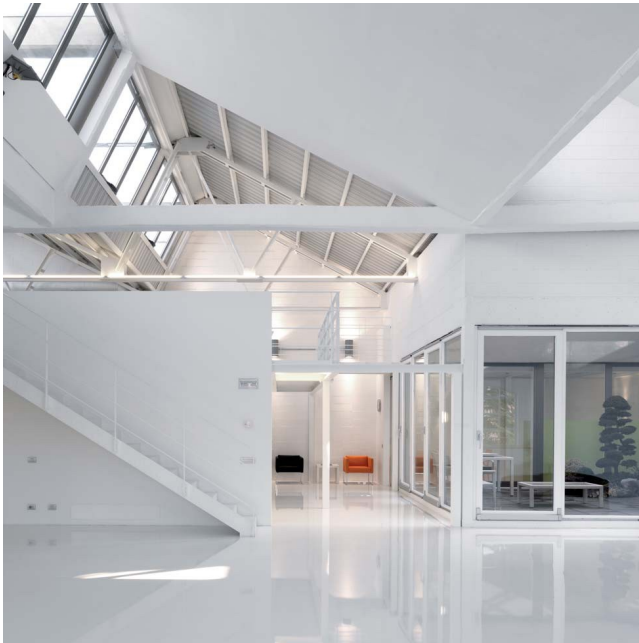


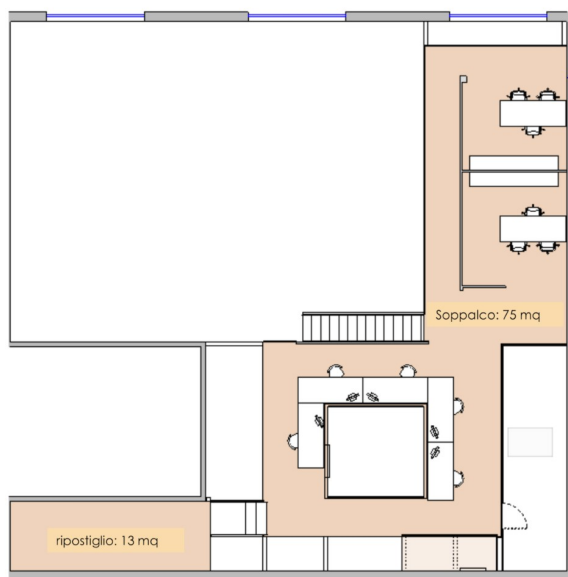
Location 1911

LOFT
INDUSTRIALE
MILANO (MI)

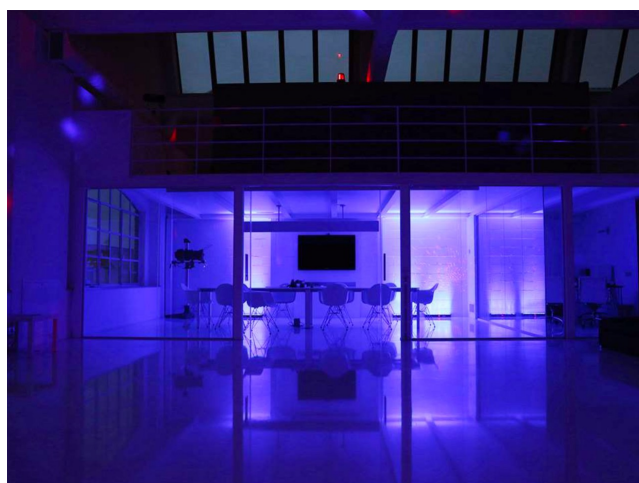
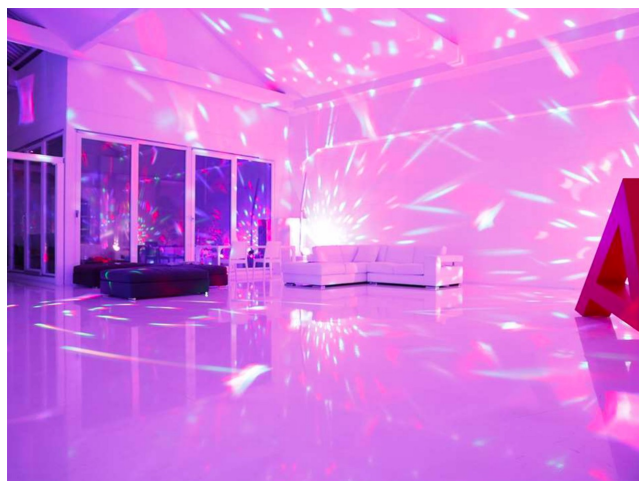
Loft daylight molto luminoso, total white. Ambiente stile New York con tripla esposizione. Location composta da un salone principale di 125 mq (80/100 pax) , saletta vetrata di 30 mq, piccola cucina, soppalco ed aree uffici. Attrezzata con schermo proiezione 3x5, tende oscuranti alle finestre. Ideale per shooting, spot, eventi, convegni e showroom.







ZANTA SOPPILCO





Si può consultare la scheda online di questa location all'indirizzo <http://www.inlocation.it/location/1911>