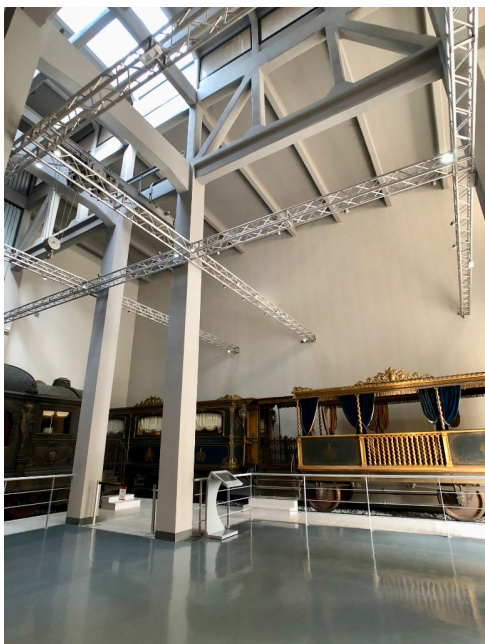
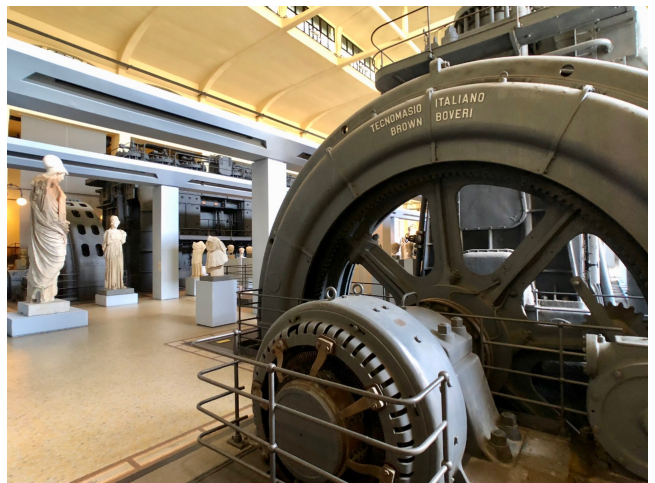


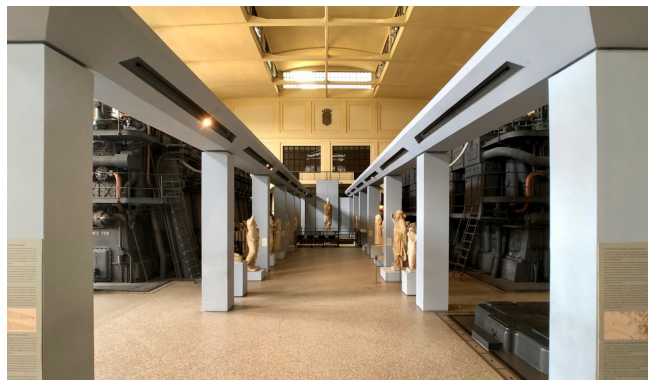
Location 1798

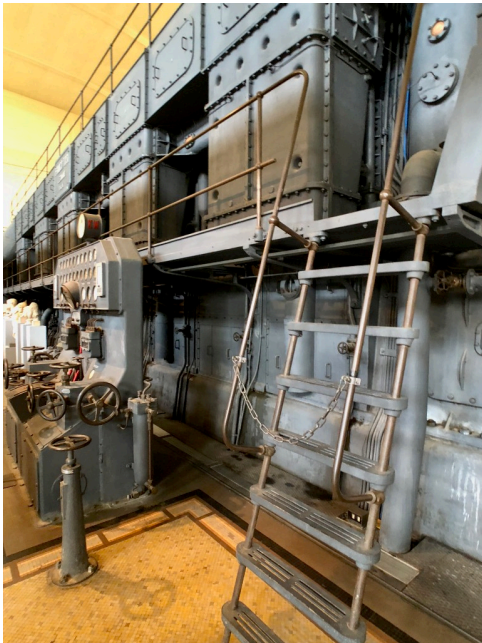
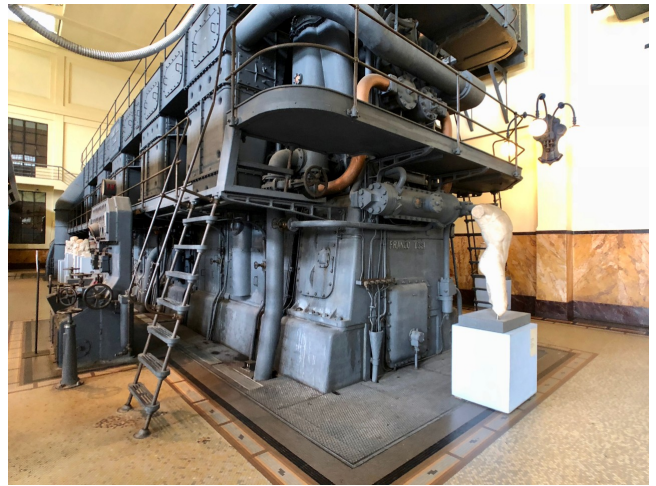
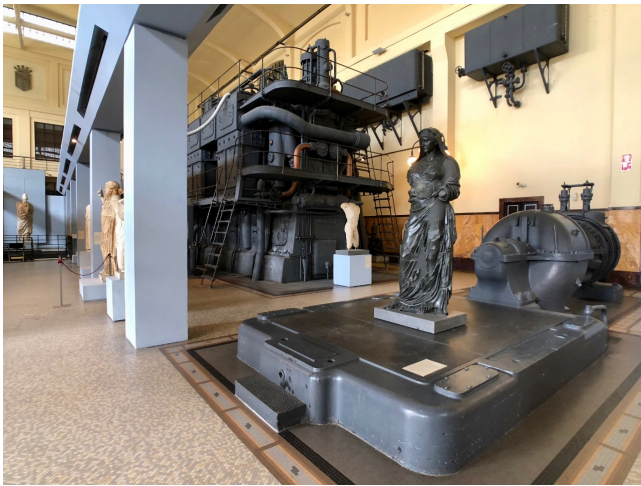
MUSEO
INDUSTRIALE
ROMA (RM) OSTIENSE

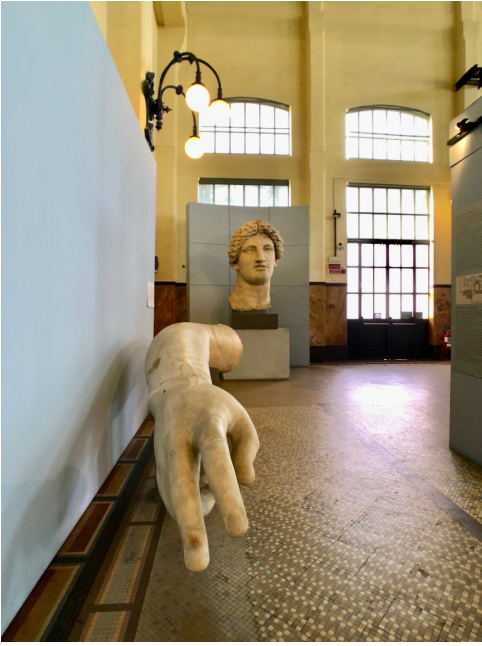
Spazio industriale riconvertito a Museo, impianti industriali e statue romane. Limitazioni di utilizzo sia per riprese sia per eventi. Autorizzazioni dietro richiesta.

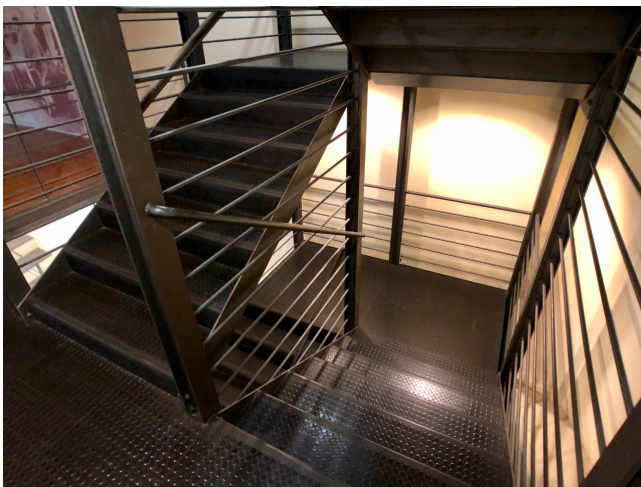
















Si può consultare la scheda online di questa location all'indirizzo <http://www.inlocation.it/location/1798>